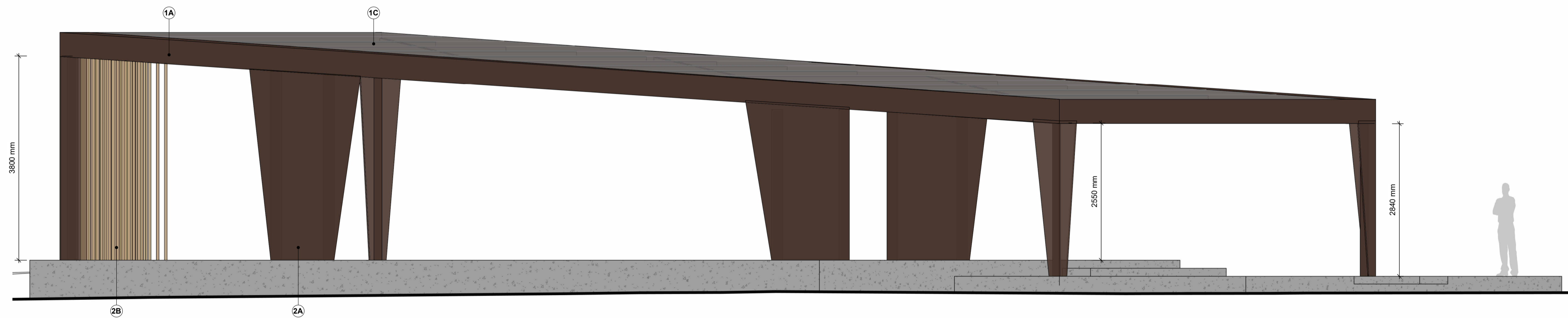
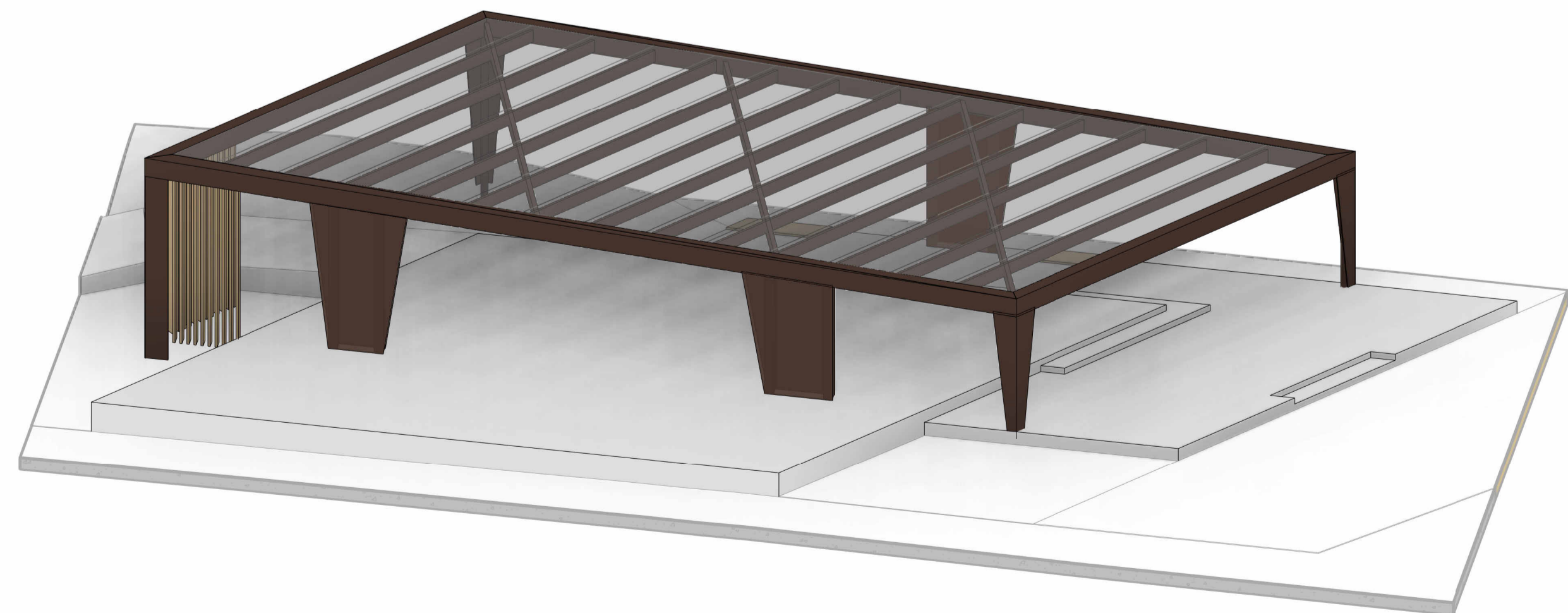


**1 Stage Shelter Detail Plan**  
SCALE - 1 : 50



**2 Stage Shelter Elevation**  
SCALE - 1 : 50

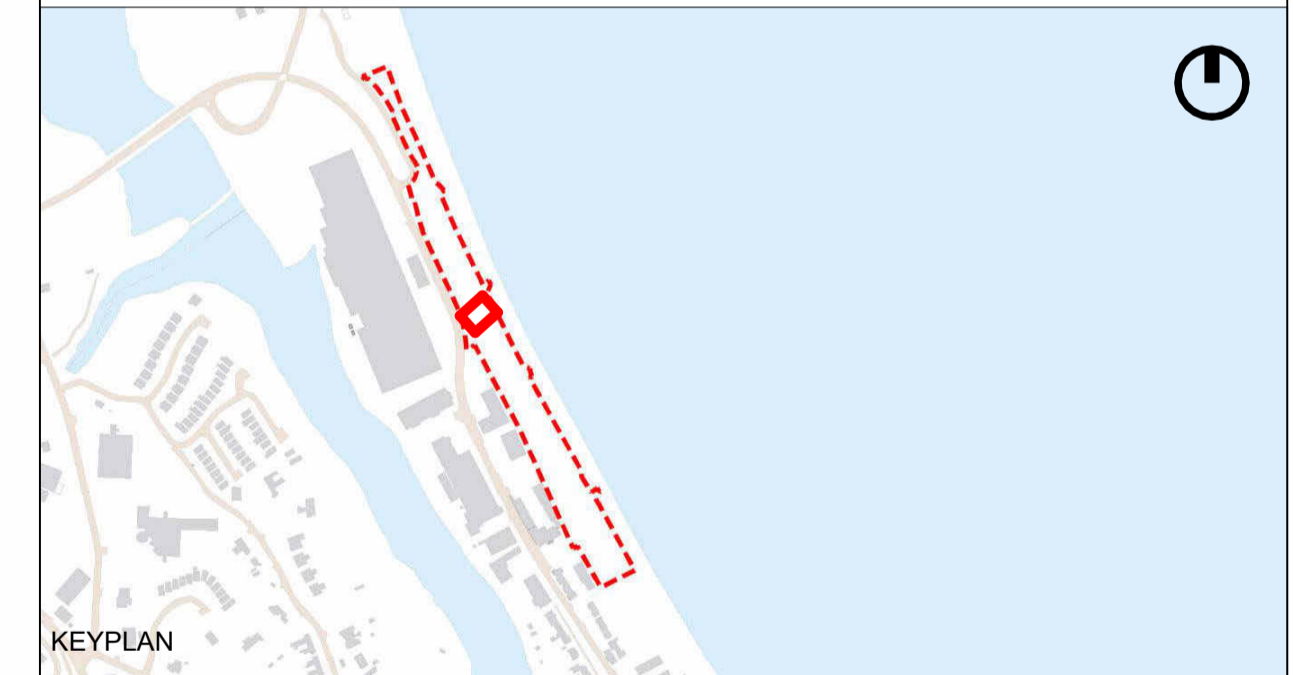


**3 Stage Shelter 3D**

**Notes:**

1. **Shelter**
  - A. Weathering steel framing
  - B. Steel columns inside cladding
  - C. Dark tinted glazing
2. **Windscreens**
  - A. Weathering steel perforated panel
  - B. Hardwood timber slat windscreen
3. **Furniture**
  - Hardwood timber slat seating fixed to stage surface

Drawing to be read in conjunction with 24272-2-D01 Design Statement



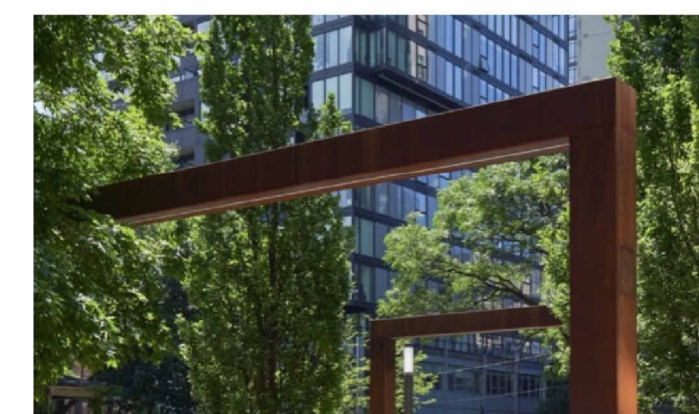
REV	DATE	COMMENTS
A	24.01.2025	Adjusted based on WCC comments

**DRAFT FOR PLANNING ONLY**

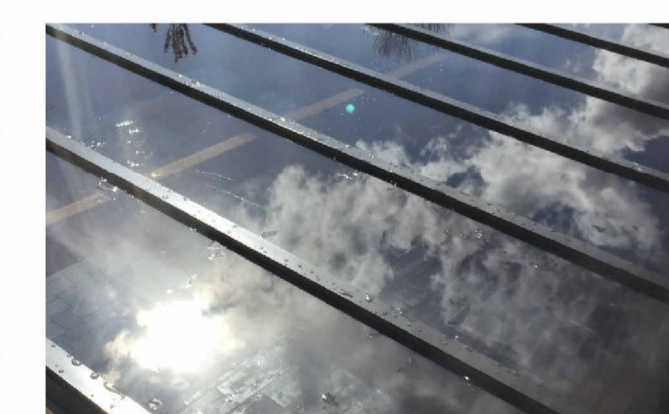
**CUNNANE STRATTON REYNOLDS**  
**LANDPLANNING & DESIGN**

GAINSBORO HOUSE,  
24 SUFFOLK STREET, DUBLIN 2  
TEL 01 661 0419 FAX 01 661 0431  
EMAIL info@csrlandplan.ie

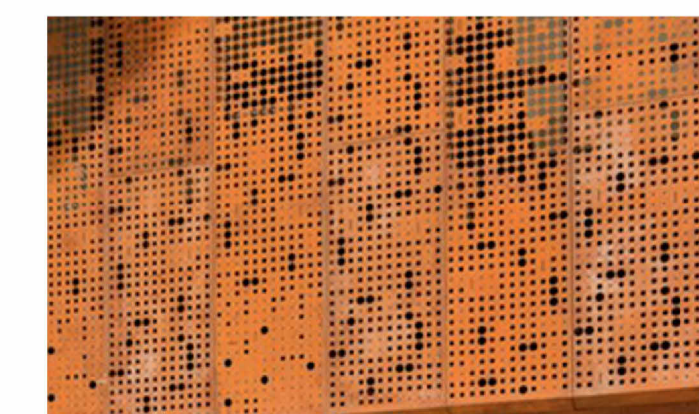
PROJECT: The Murrugh Waterfront Park Enhancement	DATE: 13/12/24
DRAWING: Performance Pavillion Details	SCALE: AS INDICATED @ A1
	DRAWN: TS
	CHECKED: MPO
	DWG. NO: 24272-2-921



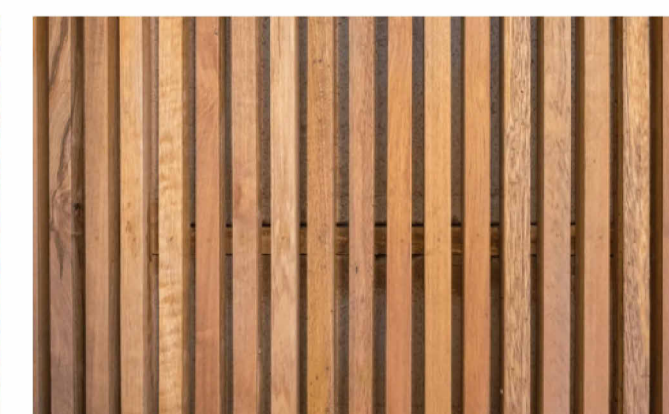
1A. Weathering Steel Framing



1C. Dark tinted Glazing



2A. Weathering steel perforated panel



2B. Hardwood timber slat windscreen